

POWER UNITS
Submersible • Belt Drive (Dry)



Contemporary elevator systems utilize the most trouble-free and easily serviced components available. The submersible pump units built by Canton Elevator are defined by that criteria and use only the highest grade materials available. There are no external pipes or fittings to leak and no belts to break, stretch or adjust.

- Furnished with silencer as standard
- HC220 valve furnished as standard (other manufacturers available)
- Furnished complete with motor wire junction box and knock-outs on both sides of unit, and provision for immersible oil heater
- Grooved or threaded outlets available (grooved is standard)
- Special dual units available
- Built-in pressure gauge

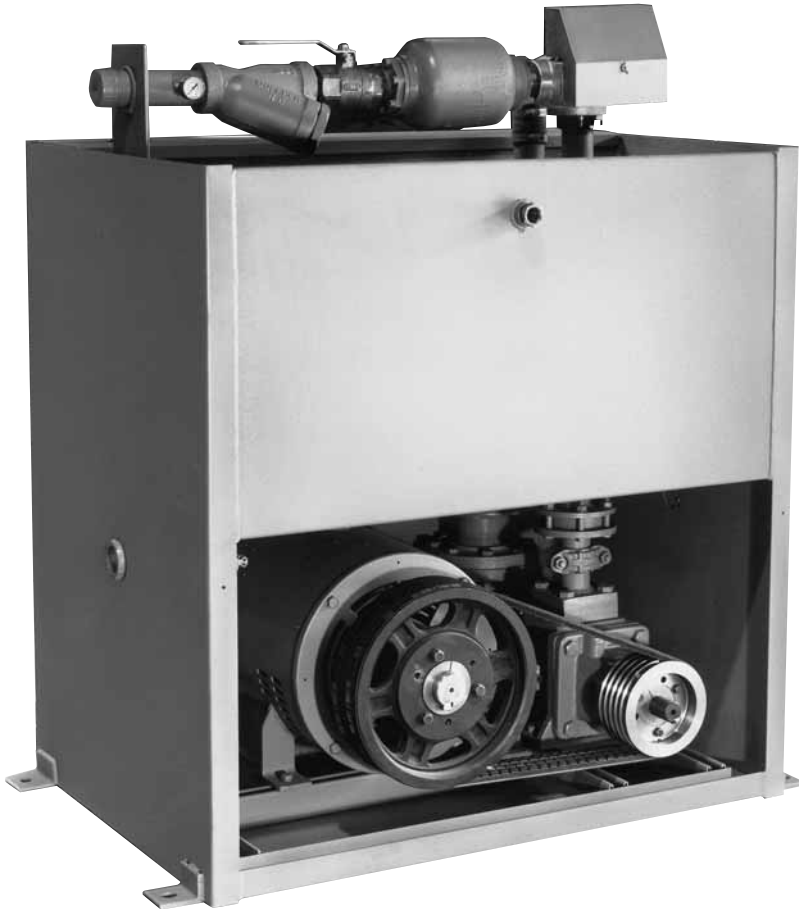
SUBMERSIBLE

MODEL	A	B	C	USE. GAL.	MAX. GAL.
2438S	38½"	24½"	34½"	29	77
2444S	44½"	24½"	34½"	33	89

NOTE: Other sizes available to meet job conditions.



V-BELT DRIVE POWER UNITS ARE BASICALLY DESIGNED TO MEET MOST GOVERNMENT SPECIFICATIONS.



- Compact, fully-enclosed design, all servicing done from the front
- Sound isolated motor and pump compartment
- HC220 valve furnished as standard (other manufacturers available)
- Furnished with silencer as standard
- Built-in pressure gauge
- Grooved or threaded outlets available (grooved is standard)
- Special units available upon request
- Available with oil heater, isolated coupling, main line strainer and gate valve built into unit

V-BELT

MODEL	WIDTH	DEPTH	HEIGHT	USE. GAL.	MAX. GAL.
3446B	46½"	34½"	48"	103	143
3646B	46½"	36½"	60"	112	152
4260B	60½"	42½"	63"	192	262

Pump sizes 156, 187, 213, 250, 275 use 3446B tank
Pump size 312 uses 3646B tank
Pump size 350 uses 4260B tank



2575 GREENSBURG ROAD • NORTH CANTON, OH 44720 • PH. 330-833-3600 FAX 330-833-0229

E-Mail info@CantonElevator.com

VISIT OUR WEB SITE

<http://www.CantonElevator.com>